

SENIOR YEAR

RGHS CLASS OF 2021



LET THE PLANNING BEGIN...

- **DEFINE WHO YOU ARE – THINK ABOUT YOUR GOALS**
- **DEVELOP A RESUME THAT INCLUDES THE FOLLOWING:**
 - **ACCOMPLISHMENTS – HONORS, AWARDS**
 - **ACTIVITIES – CLUBS, SPORTS**
 - **WORK EXPERIENCES – JOB, JOB SHADOWING**
 - **COMMUNITY SERVICE – VOLUNTEER AT FOOD PANTRY**
- **SENIOR RECOMMENDATION FORM – DUE THURSDAY, SEPTEMBER 3, TO THE GUIDANCE OFFICE**

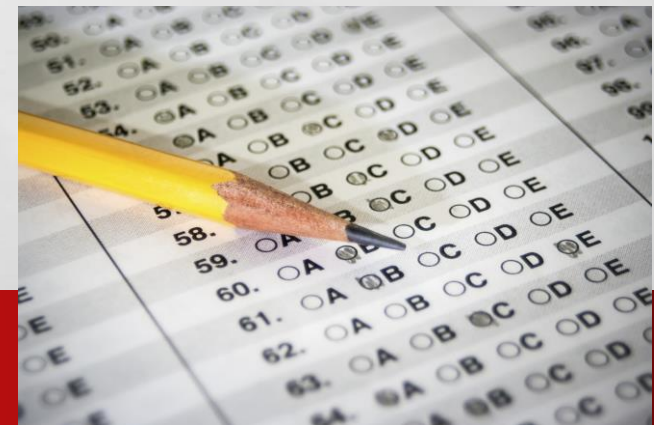


COLLEGE PATHWAY

- **REGISTER FOR THE SAT/ACT IF YOU HAVE NOT TAKEN IT YET OR IF YOU'D LIKE TO IMPROVE SCORES. COLLEGE ENTRANCE EXAM SCORES ARE TYPICALLY REQUIRED FOR COLLEGE ADMISSION TO FOUR YEAR AND SOME TWO YEAR SCHOOLS.**
 - **FALL SAT TESTING DATES:**
 - **SEPTEMBER 23RD (AT RCHS) REGISTRATION PAST DUE**
 - **OCTOBER 3RD REGISTER BY 9/4**
 - **NOVEMBER 7TH REGISTER BY 10/9**
 - **DECEMBER 5TH REGISTER BY 11/5**
 - **FALL ACT TESTING DATES:**
 - **SEPTEMBER 12TH, 13TH, 19TH REGISTER BY 8/28**
 - **OCTOBER 10TH, 17TH, 24TH, 25TH REGISTER BY 9/17**
 - **DECEMBER 12TH REGISTER BY 11/6**
- **MOST COLLEGES WILL SUPER-SCORE, MEANING THEY WILL LOOK AT YOUR BEST SCORES EVEN IF THEY ARE FROM DIFFERENT TEST DATES**
- **MOST COLLEGES WILL ACCEPT SAT/ACT SCORES ON YOUR HIGH SCHOOL TRANSCRIPT, BUT SOME REQUIRE THEM FROM THE COLLEGEBOARD/ACT – PLEASE BE SURE TO KNOW WHAT YOUR COLLEGE WILL ACCEPT SO THAT YOUR APPLICATION IS NOT DELAYED**

SAT & ACT CONT.

- **DUE TO LIMITED TESTING AVAILABILITY FOR BOTH THE SAT AND ACT LAST SPRING AND THIS FALL, MANY COLLEGES HAVE SUSPENDED THE REQUIREMENT FOR SAT OR ACT SCORES TO BE A PART OF A STUDENT'S ADMISSIONS APPLICATION**
- **OTHER COLLEGES MOVED TO A "TEST OPTIONAL" POLICY PRIOR TO THE PANDEMIC**
- **IT IS EXTREMELY IMPORTANT TO READ AND UNDERSTAND EACH COLLEGE OR UNIVERSITY'S POLICY BEFORE YOU APPLY. IF YOU ARE UNSURE, PLEASE SPEAK TO YOUR COUNSELOR.**



COLLEGE SPORTS



PLANNING TO PLAY SPORTS AT A DIVISION I OR II COLLEGE?

1. REGISTER WITH THE NCAA AND/OR THE NAIA

WWW.ELIGIBILITYCENTER.ORG

WWW.PLAYNAIA.ORG

****THERE IS A \$90 FEE TO REGISTER WITH EACH OF THESE ORGANIZATIONS. FEE WAIVERS ARE AVAILABLE FOR STUDENTS WHO QUALIFY FOR FREE OR REDUCED LUNCH****

2. HAVE SAT/ACT SCORES SENT DIRECTLY FROM THE TESTING COMPANY TO THE NCAA/NAIA

NCAA OR NAIA

- NCAA Division I

School	City
Ball State University	Muncie
Butler University	Indianapolis
University of Evansville	Evansville
Indiana University Bloomington	Bloomington
Indiana State University	Terre Haute
IPFW	Fort Wayne
IUPUI	Indianapolis
University of Notre Dame	Notre Dame
Purdue University	West Lafayette
Valparaiso University	Valparaiso

- NCAA Division II

School	City
University of Indianapolis	Indianapolis
Oakland City University	Oakland City
University of Southern Indiana	Evansville

- NAIA

School	City
Bethel College	Mishawaka
Calumet College of St. Joseph	Whiting
Goshen College	Goshen
Grace College	Winona Lake
Holy Cross College	Notre Dame
Huntington University	Huntington
Indiana Institute of Technology	Fort Wayne
Indiana University East	Richmond
Indiana University Kokomo	Kokomo
Indiana University Northwest	Gary
Indiana University South Bend	South Bend
Indiana University Southeast	New Albany
Indiana Wesleyan University	Marion
Marian University	Indianapolis
Purdue University Northwest	Hammond
Taylor University	Upland
University of Saint Francis	Fort Wayne

COLLEGE PATHWAY...CONTINUED

- **NARROW YOUR LIST OF COLLEGES DOWN TO AT LEAST FOUR.**
- **SET UP COLLEGE VISITS IF YOU HAVEN'T DONE SO YET. (MANY COLLEGES ARE ONLY OFFERING VIRTUAL TOURS AT THIS TIME)**
- **COMPLETE COLLEGE APPLICATIONS DURING SEPTEMBER AND EARLY OCTOBER.**
 - **SUBMIT APPLICATIONS BY NOVEMBER 1ST**
 - **MANY ARE ONLINE AND USE EITHER COMMON APP OR SENEDU**
 - **LIST YOUR SCHOOL COUNSELOR AND USE THIS EMAIL ADDRESS:**
 - **MRS. PARRISH (A-L) ELAINE.PARRISH@RCSC.K12.IN.US**
 - **MRS. STRANGE (M-Z) ALLISON.STRANGE@RCSC.K12.IN.US**
 - **APPLICATION FEE WAIVERS AVAILABLE FOR THOSE WHO ARE A 21ST CENTURY SCHOLAR OR ON FREE/REDUCED LUNCH**
 - **PLEASE USE A PERSONAL EMAIL ACCOUNT, NOT YOUR RCHS EMAIL ACCOUNT.**



YOUR HIGH SCHOOL TRANSCRIPT

- **REVIEW THE POWERSCHOOL VERIFICATION TRANSCRIPT**
 - **CHECK CREDIT TOTAL AND HONORS, AP, & DUAL CREDIT DESIGNATION, SAT/ACT TEST SCORES**
 - **QUESTIONS/CONCERNS – LET YOUR COUNSELOR KNOW ASAP**
- **HOW TO SEND COLLEGES OR PLACES OF EMPLOYMENT YOUR HIGH SCHOOL TRANSCRIPT:**
 - **CREATE AN ACCOUNT WITH PARCHMENT**
 - **DIRECTIONS ON SETTING UP AN ACCOUNT – HANDOUT**
 - *****NOTE: YOU MUST CHOOSE YOUR HIGH SCHOOL, RCHS – THIS STEP IS EASY TO LEAVE OFF**
 - **PLEASE USE A PERSONAL EMAIL ACCOUNT, NOT YOUR RCHS SCHOOL EMAIL ACCOUNT.**
 - **DIRECTIONS ON REQUESTING YOUR TRANSCRIPT – HANDOUT**
 - **PARCHMENT IS AN ELECTRONIC TRANSCRIPT SERVICE THAT MANY SCHOOLS USE AND IS FREE TO STUDENTS. A YEAR AFTER YOU GRADUATE, THERE WILL BE A PARCHMENT FEE OF \$3.25 WHEN YOU REQUEST YOUR TRANSCRIPTS.**



FINANCIAL PLANNING

- **RESEARCH AND BEGIN COMPLETING SCHOLARSHIP APPLICATIONS**
 - **[RCHS GUIDANCE SITE](#) IS A GREAT PLACE TO START**
 - **LILLY ENDOWMENT COMMUNITY SCHOLARSHIP OPEN TO THOSE IN TOP 25% - AUGUST 1ST – SEPTEMBER 15TH**
 - **JASPER-NEWTON FOUNDATION COMMUNITY SCHOLARSHIPS – NOVEMBER 15TH – MARCH 1ST**
 - **LOCAL SCHOLARSHIPS – DEADLINES VARY, TYPICALLY DUE IN MARCH/APRIL**
 - **MANY COLLEGE SCHOLARSHIP DEADLINES COINCIDE WITH THE NOVEMBER 1ST COLLEGE APPLICATION DEADLINE – IF YOU APPLY AFTER NOVEMBER 1ST, YOU MAY MISS OUT ON MERIT-BASED SCHOLARSHIPS THAT YOU COULD QUALIFY FOR**

FINANCIAL PLANNING CONT.

- **ATTEND FINANCIAL AID NIGHT: SEPTEMBER 23RD AT 6:00 P.M. IN RCHS AUDITORIUM**
- **FILE YOUR FAFSA (FREE APPLICATION FOR FEDERAL STUDENT AID) – OCTOBER 1ST – APRIL 15TH**

FAFSA.GOV BE SURE TO USE THE OFFICIAL SITE. SCAM WEBSITES DO EXIST.

FSA ID (WEBSITE TO CREATE USERNAME AND PASSWORD THAT SERVES AS YOUR LEGAL SIGNATURE ON THE FAFSA)

- **ATTEND COLLEGE GOAL SUNDAY (VIRTUALLY) FOR FAFSA HELP: OCTOBER 25TH**

MILITARY PATHWAY

- **IF YOU ARE THINKING YOU WANT TO SERVE IN THE MILITARY AND HAVE NOT MET WITH A RECRUITER YET, YOU NEED TO DO SO ASAP!**
 - **SEE MRS. HANNON IN THE GUIDANCE OFFICE FOR CONTACT INFORMATION FOR THE SPECIFIC MILITARY BRANCHES.**
- **RGHS IS OFFERING THE ASVAB, THE MILITARY APTITUDE TEST, ON THURSDAY, SEPTEMBER 10. IF YOU ARE INTERESTED IN TAKING THIS EXAM, SIGN UP BY TUESDAY, SEPTEMBER 1ST, IN THE RGHS GUIDANCE OFFICE.**

APPRENTICESHIP PATHWAY

- ***EARN WHILE YOU LEARN!***
- **3-5 YEAR PROGRAMS THAT ALLOW STUDENTS TO LEARN A CONSTRUCTION TRADE BOTH ON THE JOB AND IN THE CLASSROOM WHILE EARNING A PAYCHECK AND BENEFITS**
- **MANY PROGRAMS ALSO ALLOW STUDENTS TO EARN AN ASSOCIATE'S DEGREE IN APPLIED SCIENCE FROM IVY TECH COMMUNITY COLLEGE AT NO ADDITIONAL COST TO THE STUDENT**
- **FIND MORE INFORMATION AT:**

WEBUILDNWI.COM

BUILTTOSUCCEED.ORG

WORKFORCE PATHWAY

- **WORKONE**

- **PROVIDES JOBSEEKER SERVICES SUCH AS HELP LOOKING FOR A JOB, CAREER PLANNING, INTERVIEW SKILLS, RESUME AND COVER LETTER ASSISTANCE, ETC**
- **LOCATION IN RENSSELAER**

- **NEXTLEVEL JOBS**

- **PROVIDES HOOSIERS WITH FREE STATE-WIDE TRAINING IN HIGH-PAYING, IN-DEMAND INDUSTRIES**

QUESTIONS?